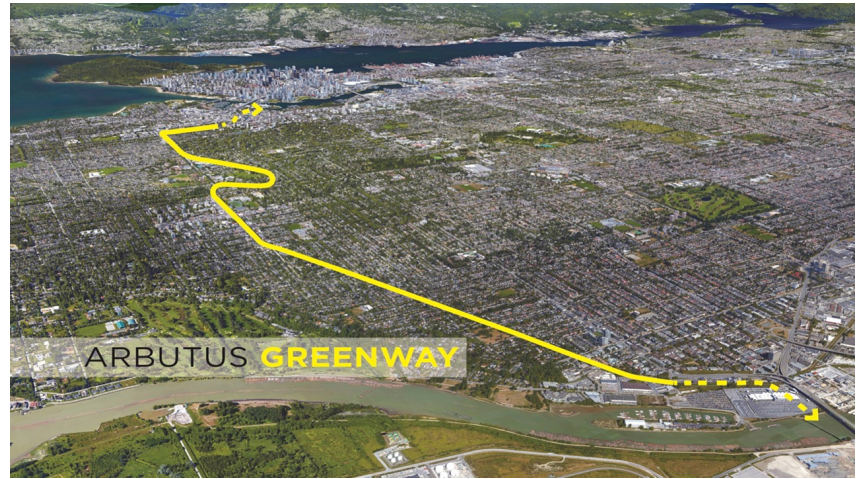


# DIALOG

## ARBUTUS GREENWAY DESIGN VISION

# An important corridor in the city

Urban Planning & Policy



### LOCATION

Vancouver, BC

### CLIENT

The City of Vancouver

### COMPLETION

2018

### COLLABORATORS

Urban Systems

BC Barrier Free Design

Hemmera

Lucent Quay

Maureen Smith Consulting

PBX Engineering

### DIALOG SERVICES

Landscape Architecture

Planning & Urban Design

The Arbutus Greenway is a north-south transportation corridor that connects people, parks and places from False Creek to the Fraser River. The design envisions a vibrant and dynamic corridor for walking, wheeling, cycling, and a future streetcar line, that passes through eight distinct character zones. This project reimagines a historic rail corridor and provides a high-quality, accessible public space for walking, cycling, as well as space for a future streetcar route. It will be a destination that fosters both movement and rich social interaction – inspired by nature and the stories of the places it connects.